

Planning
Committee Meeting

11 January 2021



Item 3b

21/00688/FUL

Whins Green Kitchen, Whins Lane,
Wheelton

Section 73 application to vary condition no. 4 (hours of operation) attached to planning permission 19/01030/FUL (Change of use from holistic spa to holistic spa and cafe) to allow longer opening hours on Fridays and Saturdays to between 09:00 and 23:00 hours

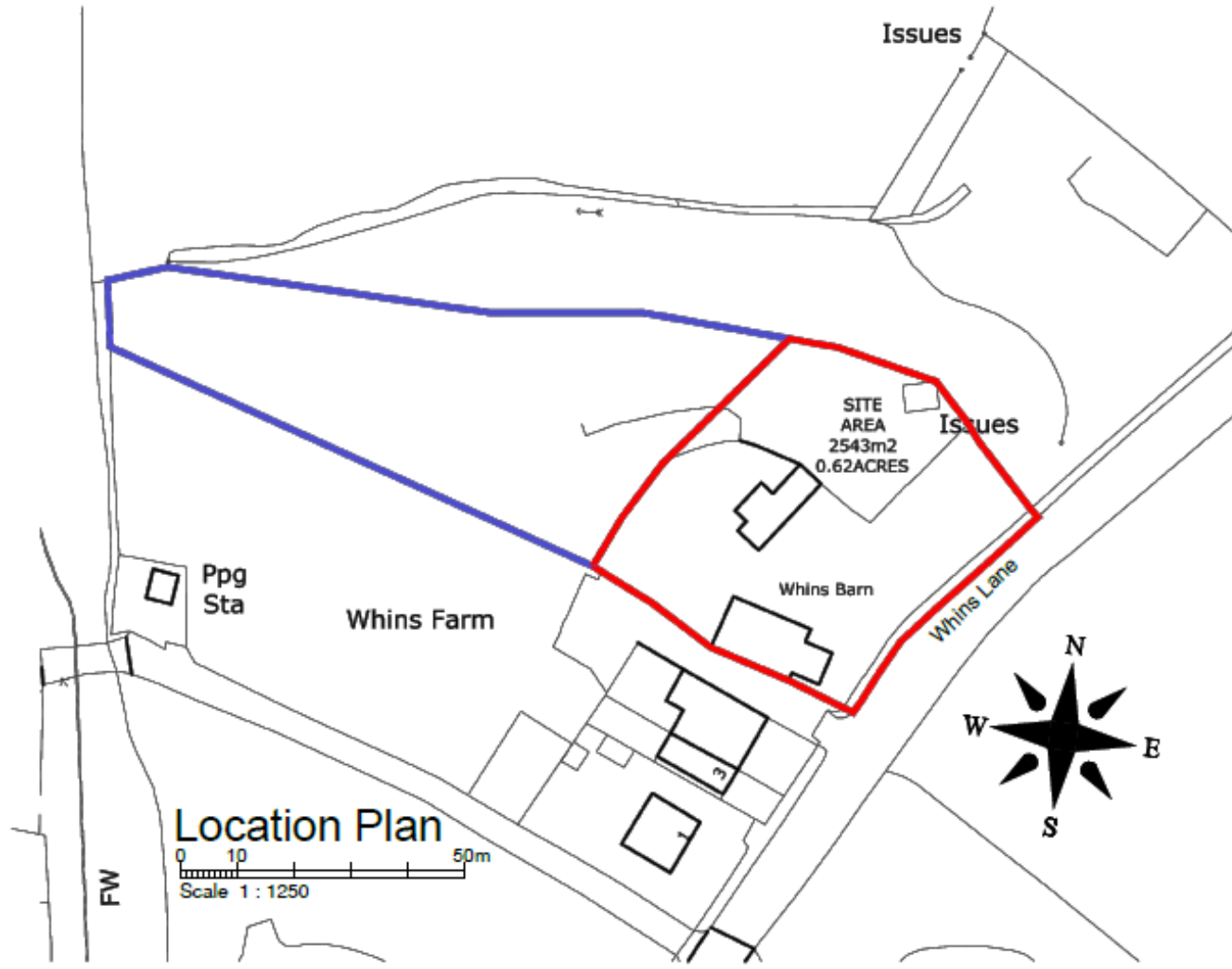
Item 3c

21/01294/FUL

Whins Green Kitchen, Whins Lane,
Wheelton

Section 73 application to vary condition no. 3 (hours of operation) attached to planning permission 20/01337/FUL (Conversion of subterranean void space beneath the existing building and associated construction works to provide cafe / day spa facilities (retrospective)) to allow longer opening hours on Fridays and Saturdays to between 09:00 and 23:00 hours

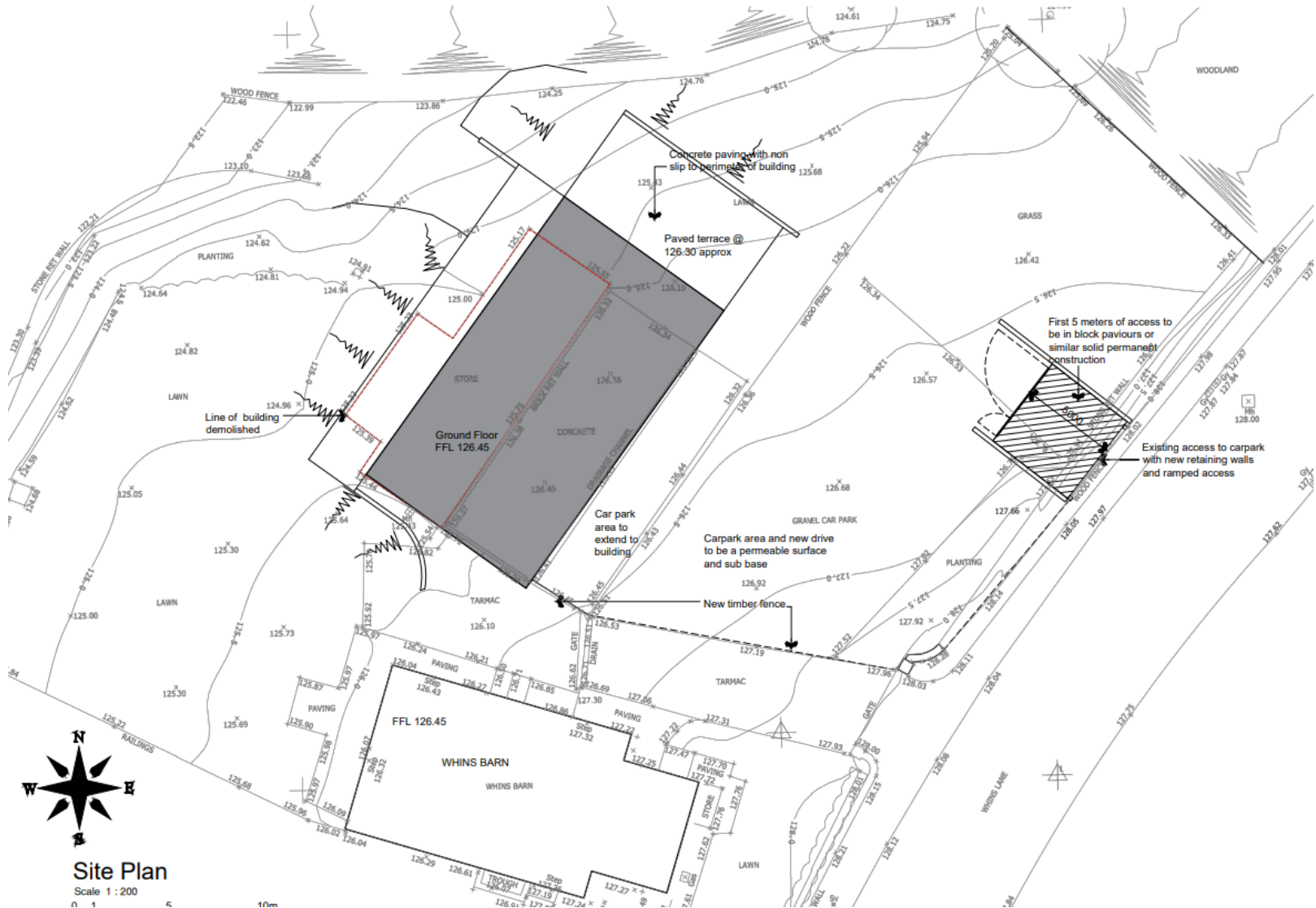
Location plan



Aerial image



Previously approved site plan

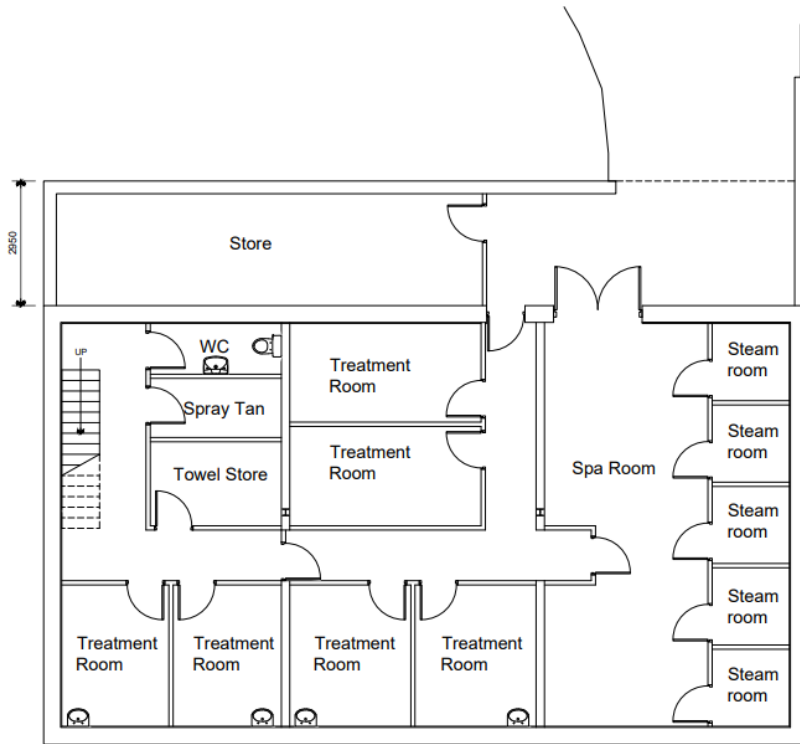


Site Plan

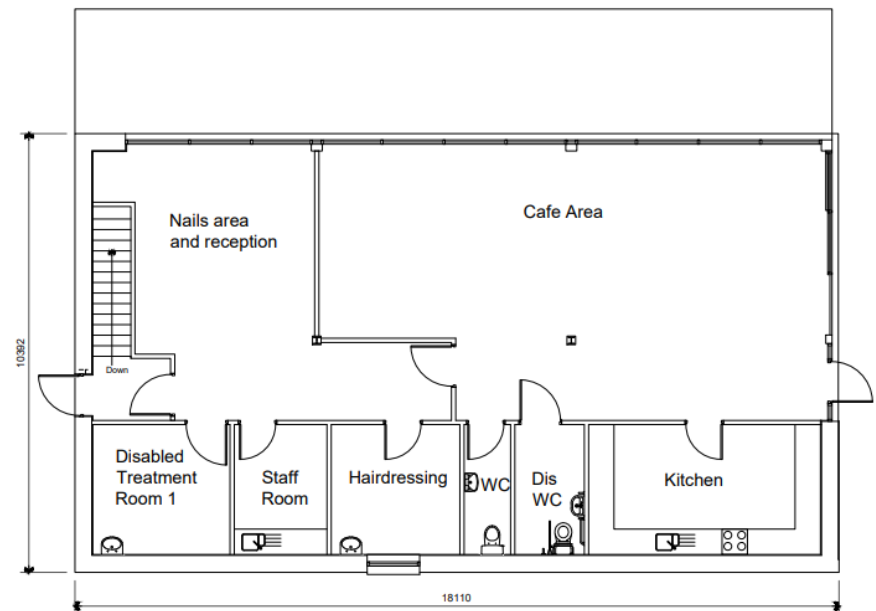
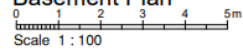
Scale 1 : 200

0 1 5 10m

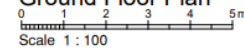
Previously approved floor plans



Basement Plan



Ground Floor Plan



Site photo



Site photo



Site photo



Site photo



Site photo



Whins Lane to site frontage

